





4

5

TWIN PARK

TWIN PARK

LUXURY LIVING

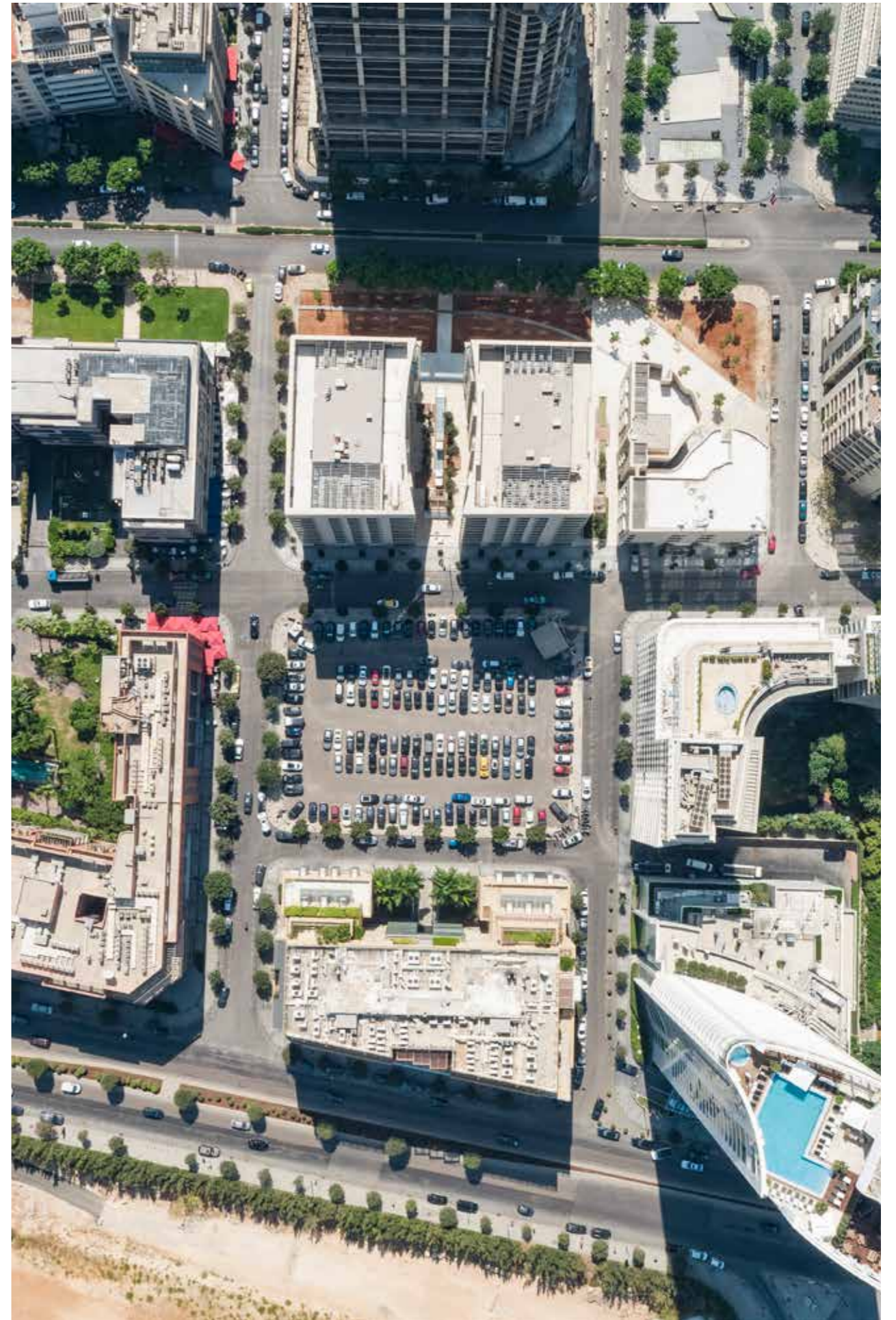
TWIN PARK, A HAVEN IN DOWNTOWN BEIRUT

Your very own green space, a place of escape, perfect for reflection, at ease in the center of Beirut!

Twin Park offers up luxurious community living in Beirut's exclusive Downtown amid walls of green and landscaped gardens. Escape the bustle of city life, retreat to an island of calm in this most vibrant of cities!

Just minutes away from the very best Beirut has to offer, Twin Park's central location offers easy access to the finest shops and entertainment venues.

Twin Park rests a short walk away from the city's premium shopping areas and the hive of life that is Beirut's thriving hotel district, Zaytouna Bay and much more. Sophisticated, bespoke and perfectly formed, Twin Park offers a unique opportunity to own property in the center of the region's most cosmopolitan, dynamic city.



AN EXCLUSIVE LOCATION, LUXURY LIVING

Prime location 01

A LIVING BUILDING IN THE CENTER OF BEIRUT

DISCOVER ONE OF BEIRUT'S MOST PRESTIGIOUS ADDRESSES

Discover life in Beirut's most animated neighborhood with nightlife,
shopping and entertainment just minutes away.

THE LOCATION

THE HEART OF BEIRUT, ON YOUR DOORSTEP

Located in a dynamic neighborhood, Twin Park resides a short distance from the thriving Zaytouna Bay with its first class restaurants and stunning views of the marina and waterfront city park. The elite brands and boutiques of Park Avenue and the luxury destinations in Beirut Souks are mere minutes away from your door.

Lovers of great food will discover an exciting collection of first-rate restaurants all within walking distance of Twin Park. Cosmopolitan, refined and engaging, Twin Park is part of one of Beirut's most prestigious districts, an evolving, ever-changing arena of entertainment, ideas and culture, where people come together everyday.

/ 12



ZOOM IN

POINTS OF INTEREST

- 1 Saint George Hotel
- 2 Zaytouna Bay
- 3 Beirut Souks
- 4 Bank Audi Headquarters

HOTELS

- 5 Four season
- 6 Phoenicia

NEW BUILDINGS

- 7 Beirut Terraces
- 8 B11
- 9 3 Beirut



/ 13

TWIN PARK, EVERGREEN, COSMOPOLITAN LIFE

The building 02

GREEN LIVING
IN BEIRUT'S
DOWNTOWN

A LIVING BUILDING, A GREEN LIFE

An island of peace - Twin Park's cutting edge design and green accents
Two stunning 10-story buildings make up the evergreen Twin Park.

GREEN LUXURY IN DOWNTOWN BEIRUT

MATERIALS

Green walls create a sense of serenity and nature. A landscaped courtyard between the two wings forms a place where people can meet, engage and form a true community. Underground parking and retail spaces on the ground floor round out this most contemporary, exciting project.

Living, breathing, the two buildings give off a sense of vibrancy that few other homes can achieve. A low carbon footprint means that Twin Park filters air year round, reducing the amount of CO₂ in the atmosphere. With cascading water in the entrance, landscaped gardens and green accents all around, Twin Park lives up to its name. With its cutting edge façade, the building becomes a living landmark as rich materials create a dynamic, natural facade.





LANDSCAPING

TIMELESS, GREEN DESIGN

A green island in the heart of Beirut, Twin Park is an oasis of calm in a hectic, busy city. Resting between the two buildings is a landscaped, refreshing courtyard where residents and visitors alike can relax, meet, talk and unwind. A delicate waterfall runs into a refined water basin, cooling the air and creating a sense of sophisticated calm.

Green walls climb the height of the façade, cooling and refreshing each and every apartment. A green island in the center of Beirut, Twin Park is a place to escape city life in a luxurious, harmonious setting.

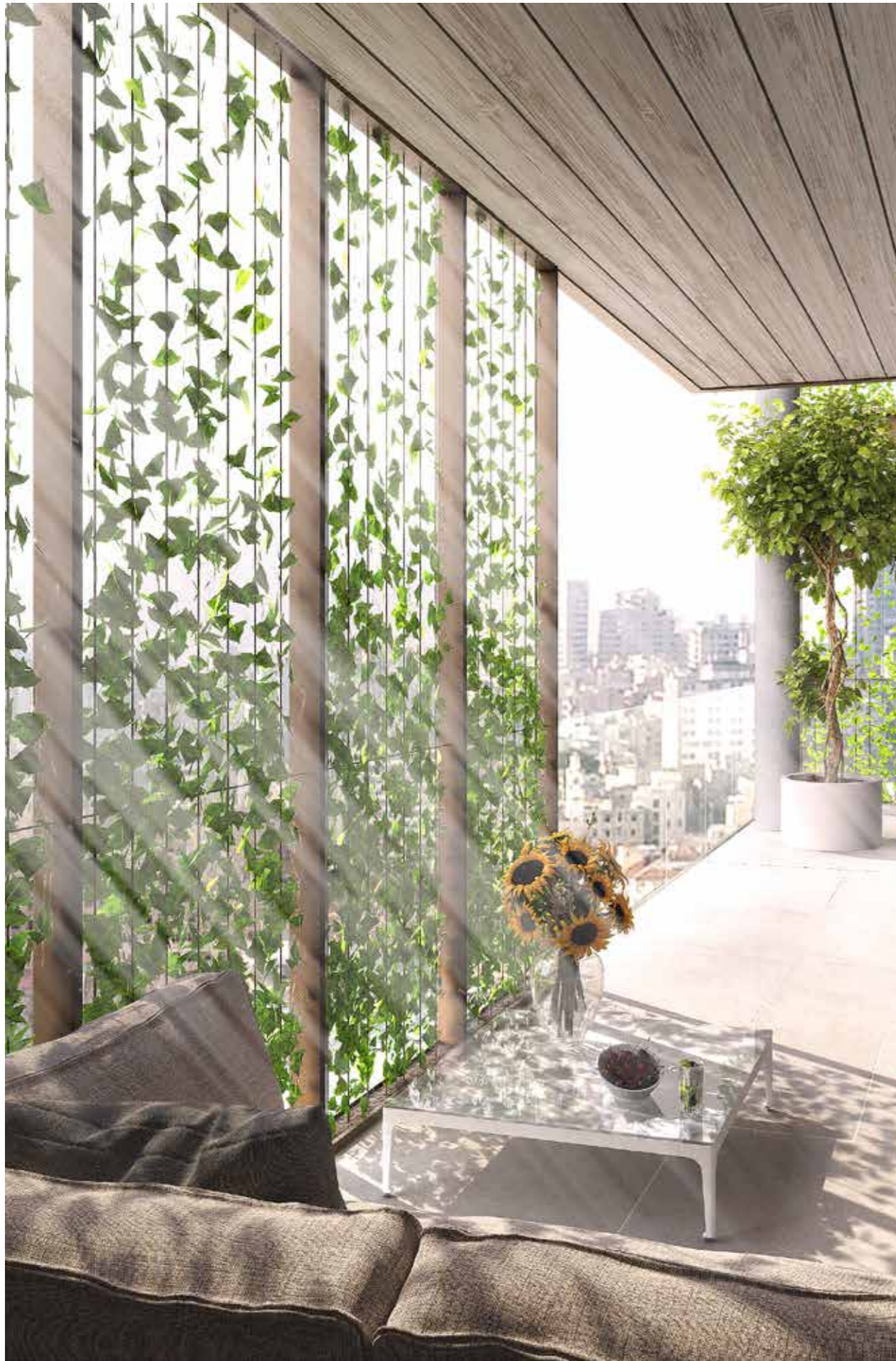
A SIGNATURE ENTRANCE AND PRIVATE LOBBY

ENTRYWAY

A luxurious entryway awaits as you approach Twin Park. Walking through the gardens, alongside water basins and manicured trees, residents are led to a transparent envelope forming a unique lobby and linking the two independent buildings.

Interior lobby walls are home to waterfalls and planted screens, marrying the indoor with the outdoor as visitors can take a seat, relax and enjoy a calm, soothing communal space. With access to either of Twin Park's buildings, the entryway forms the perfect place to meet and greet before heading out into the city.





APARTMENTS

PRIVACY & LUXURY - TWIN PARK

Inside Twin Park, privacy comes first. Apartments range from one-bedroom to five-bedrooms with their own private entrance. Most lobbies feature either one or two apartment entrances, creating intimate, personal spaces where only one other apartment is ever visible.

The exterior balconies are shaded and gently hidden by green walls, resulting in intimate, private spaces. The apartments overlooking the courtyard feature staggered windows that ensure privacy and offer beautiful vistas.



PRIVACY & LUXURY - TWIN PARK

Leaving no comfort unconsidered, Twin Park has a milieu of amenities. These include areas such as private wine refrigerator for each apartment of 3 bedrooms and more to help inspire intimate and memorable moments.)

The specification and details of Twin Park project maintain the highest caliber attention to detail to create the ideal modern living experience.

Each apartment is provided with the following specifications, and we invite you to learn more about these amenities at www.twin-park.com





APARTMENTS

SPECIFICATIONS

- European or American windows frame and double glazing
- Storage rooms and parking spaces in basements
- Generous reception areas
- Large master bedrooms
- Top range marble tiles in reception and guest bathrooms
- Engineered wood flooring in bedroom area
- First choice ceramic tiles for kitchen and bathrooms
- Premium veneered fire rated door for main entrance
- Premium veneered main doors
- PU painted interior doors
- PU painted cupboards
- European kitchen finishing
- Prime European sanitary ware and fittings.
- Central heating system with individual counters for each apartment or any other individual heating system that the developer finds more appropriate.
- Air conditioning prime climate control VRV
- European electrical equipment and accessories of the highest standard with EIB system
- Digital satellite TV
- Private wine refrigerators for specific apartments

Any modifications in technical specifications, and any selection of equivalence in material, brands, finishes, etc., remain at the sole discretion of the Developer.

HEALTH & WELLBEING AT TWIN PARK

AMENITIES

AMENITIES

32

33

TWIN PARK

TWIN PARK

Amenities 03

FITNESS
& HEALTH
AT YOUR
FINGERTIPS

WORLD CLASS FACILITIES ON YOUR DOORSTEP

Contemporary, luxurious, Twin Park residents can enjoy a private fitness center replete with the latest technologies.

SPORT & SPA

DISCOVER HEALTHY LIVING AT TWIN PARK

Fully serviced and with a sophisticated concierge team, Twin Park represents the very best of city living with a dedicated team to ensure that residents experience only the very best.

Health and comfort are key at Twin Park. A modern, exclusive health center, with a spa and a gym and a full suite of machines and services will help ensure that the keys to a fit and healthy lifestyle sit just minutes from your front door.



Specifications 04

DISCOVER
TWIN PARK

FLEXIBLE, PERSONAL, YOURS

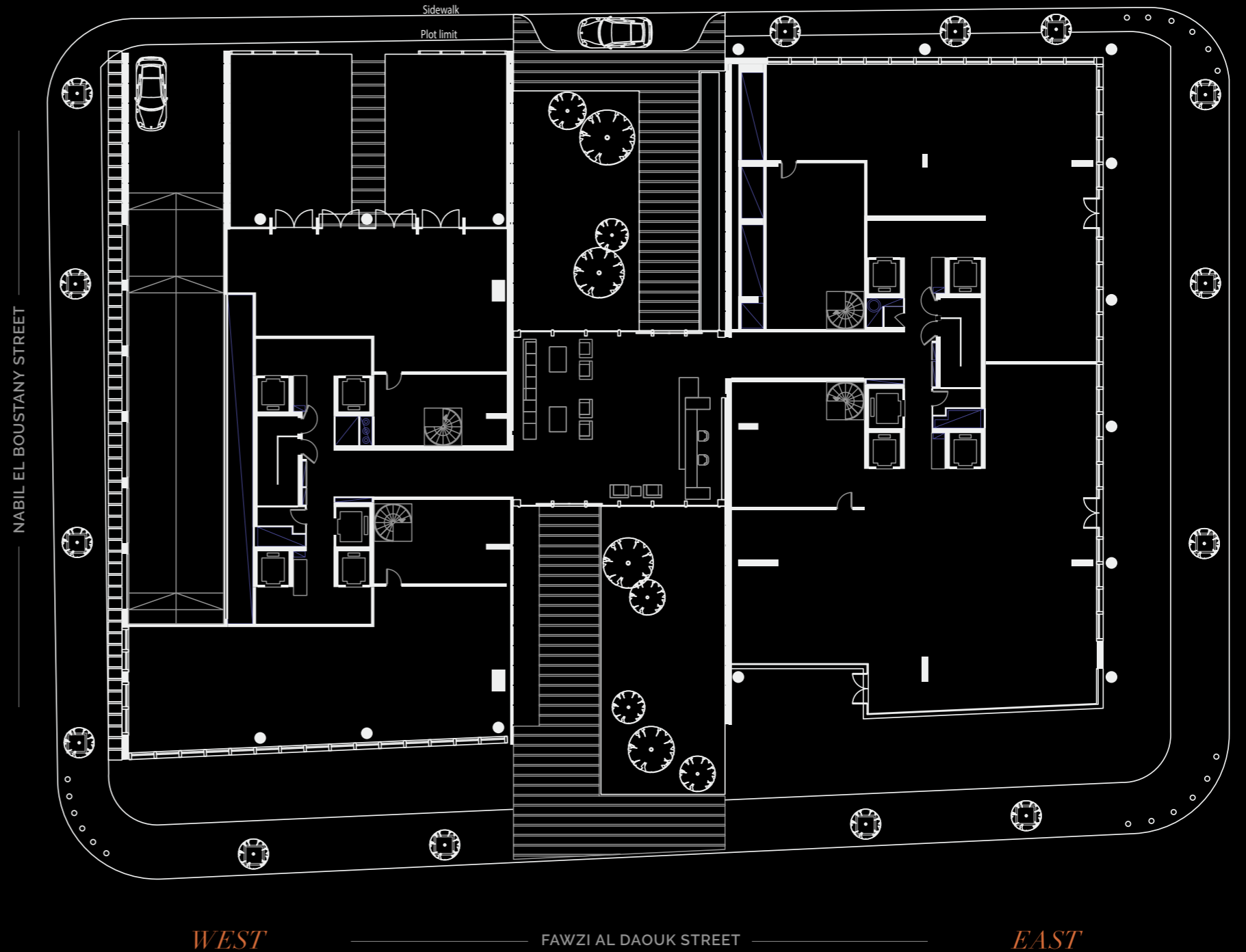
Personalized homes with character and soul

MORE INFORMATIONS

PROJECT SPECIFICATIONS & FACILITIES

Twin Park provides a myriad of facilities for the pleasure of the residents:

- Security Surveillance
- 24/7 concierge and doorman services
- Conference / Recreation room
- Health club
- Drivers lounge
- Visitor parking space
- Landscaped area at both sides of the lobby
- Garbage disposal room
- Anti-seismic design
- Fire detection and fighting systems
- High quality passenger elevators
- Service elevator for all apartments
- Full power electrical generators



PROJECT TEAM

GET IN TOUCH ?

CREDENTIALS

CONTACT



Owner



Development Coordinator and Sales Manager



Design Architects



Architect of record



Structural Consultant



Electro - Mechanical Consultant



Technical Controller

Xxxxxxxx is one of Lebanon's most prominent real estate developers, with residential and commercial buildings throughout Beirut and its environs. The company's tradition of excellence guarantees the highest caliber construction and collaboration with industry-leading organizations.

Twin Park believes in delivering exceptional quality, high value, and incredible service in order to create a superior luxury experience with an unwavering commitment to customer satisfaction

Learn more at [www.](#)

Please feel free to get in touch with us at any time to discuss Twin Park, the details of the brochure, or to schedule a showing.

TEL
MAIL



The details contained in this brochure are intended to give a general indication of the proposed development and floor layouts. The photography and the computer generated images are representative only. All amenities such as the health club, swimming pools, decorative features, false ceiling details, lighting fixtures and furniture elements shown in this brochure cannot be considered as part of the standard proposed design, they only intend to give an indication of the possibilities that might be added by the apartments' end-users at their own cost. The company reserves the right to increase or reduce the total space of the common areas and their distribution within the project, alter any part of the development, the floor layouts, or any other details, at any time, and without prior notice to the end-users. The contents herein shall not form part of or be deemed to form part of any contract or be a representation including any such contract. The full terms and conditions of the sale are contained in the company's sales contract.

