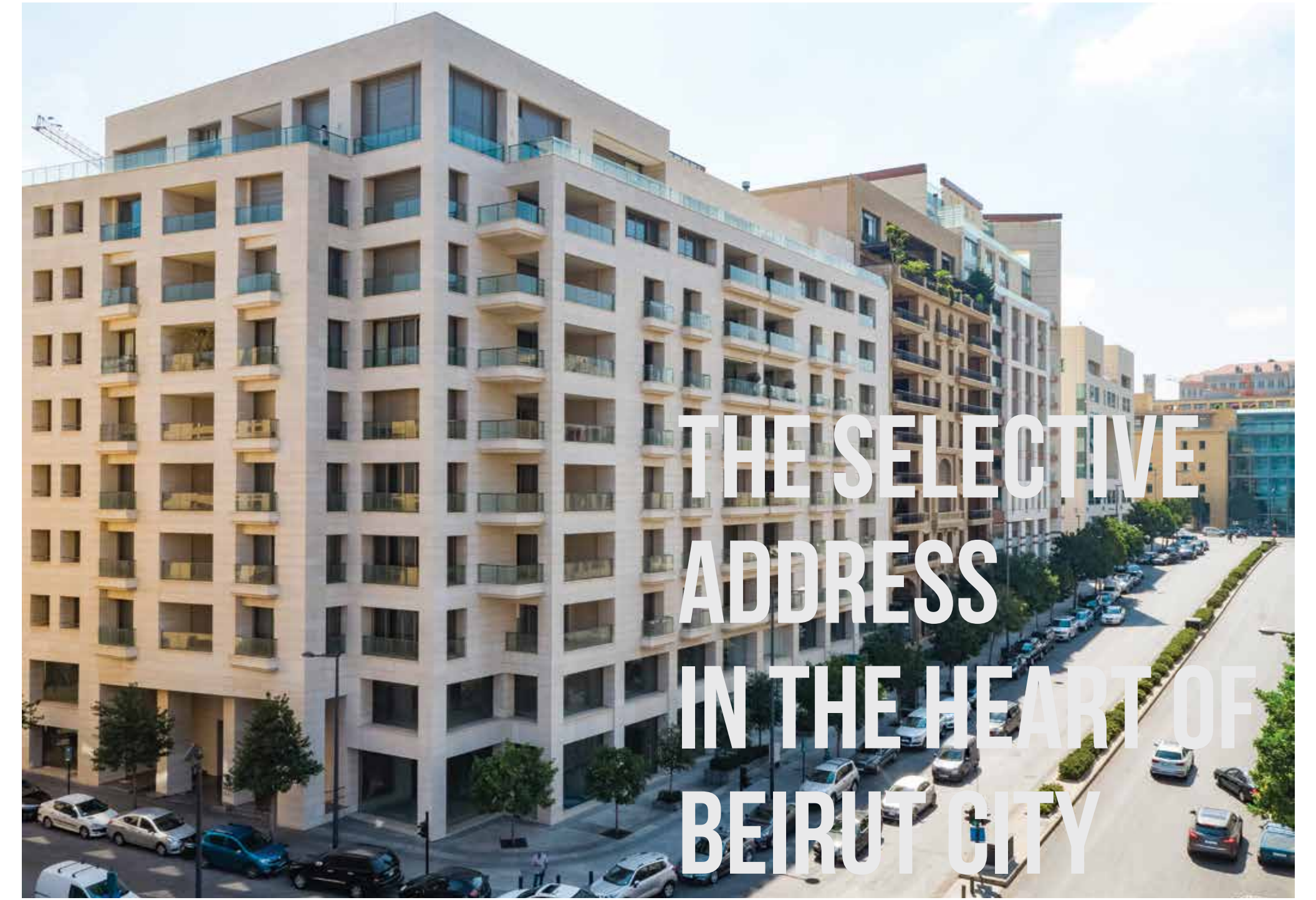




PARK PALACE

THE SELECTIVE
ADDRESS
IN THE HEART OF
BEIRUT CITY



**THE SELECTIVE
ADDRESS
IN THE HEART OF
BEIRUT CITY**



THE LOCATION



GREEN, LUXURIOUS & CENTRAL

IDEALLY SITUATED IN BEIRUT CENTRAL DISTRICT, THIS SPOT HIGHLIGHTS ALL THAT THE AREA'S MODERN LIFESTYLE AND ACTIVITIES HAVE TO OFFER...ALL WITHIN CONVENIENT COMMUTING DISTANCE FROM THE REST OF THE CITY.

Located in the heart of the capital, Park Palace symbolizes a high standard residential building located at the "Avenue du Parc" Cross road between Avenue des Français and Avenue du Parc.

The widest street in Beirut Central District, it creates an open pathway linking Park Palace to BCD's marvelously spacious park.

Surrounded by luxurious residential developments and large-scale projects, Park Palace is located within walking distance of Beirut Souks, art galleries, restaurants, banks, commercial offices and the



Parliament Square. Major hotels like the Four Seasons, Grand Hyatt, Rotana, and Hilton are close-by.

With the main business center and shopping area so practically near, it is the perfect place to fully experience a wide array of sensations from fine dining to quality shopping, superior sports and leisure facilities, schools, universities, and work.



THE APARTMENTS

YOUR KINGDOM OF EXCLUSIVITY

EVERY ELEMENT BRINGS THE HIGHEST STANDARDS TO LIFE.

Park Palace's outstanding architecture displays the distinguished attributes of a privileged lifestyle. The precise craftsmanship present in each detail reveals itself in the wonderful marble inlay work.

The façade, design, planning, interiors and finishing come together to make residents feel comfortable in their own personal spaces. This is enriched by reassuring privacy and security, which offers a superb combination of comfort and luxury.

Park Palace benefits from different views, each breathtaking in its own way. From a sea view, to a mountain scene, a view overlooking Park Avenue and the green Beirut shoreline gardens, you will always set your sights on something inspiring.



DAY VIEW



NIGHT VIEW





A HOME YOU WILL TREASURE LIKE A CROWN

PARK PALACE FEATURES 8 PREMIUM RESIDENTIAL FLOORS.

Offering only the finest selection, Park Palace has 3 types of apartments with an approximate area of 460m², 550m² and 620m² from the first to seventh floor.

Every aspect of the interiors reflect attention to detail and the finest quality. Using only quality materials and luxury products, a sense of magnificence and splendor is brought to life.





1st FLOOR

APARTMENT 1A

645 sqm
5 bedrooms

APARTMENT 1B

487 sqm
4 bedrooms

AVENUE DU PARC

Scale 1/250
Measurements in m



2nd FLOOR

APARTMENT 2A

645 sqm
5 bedrooms

AVENUE DU PARC

Scale 1/250
Measurements in m



3rd
FLOOR

APARTMENT 3A

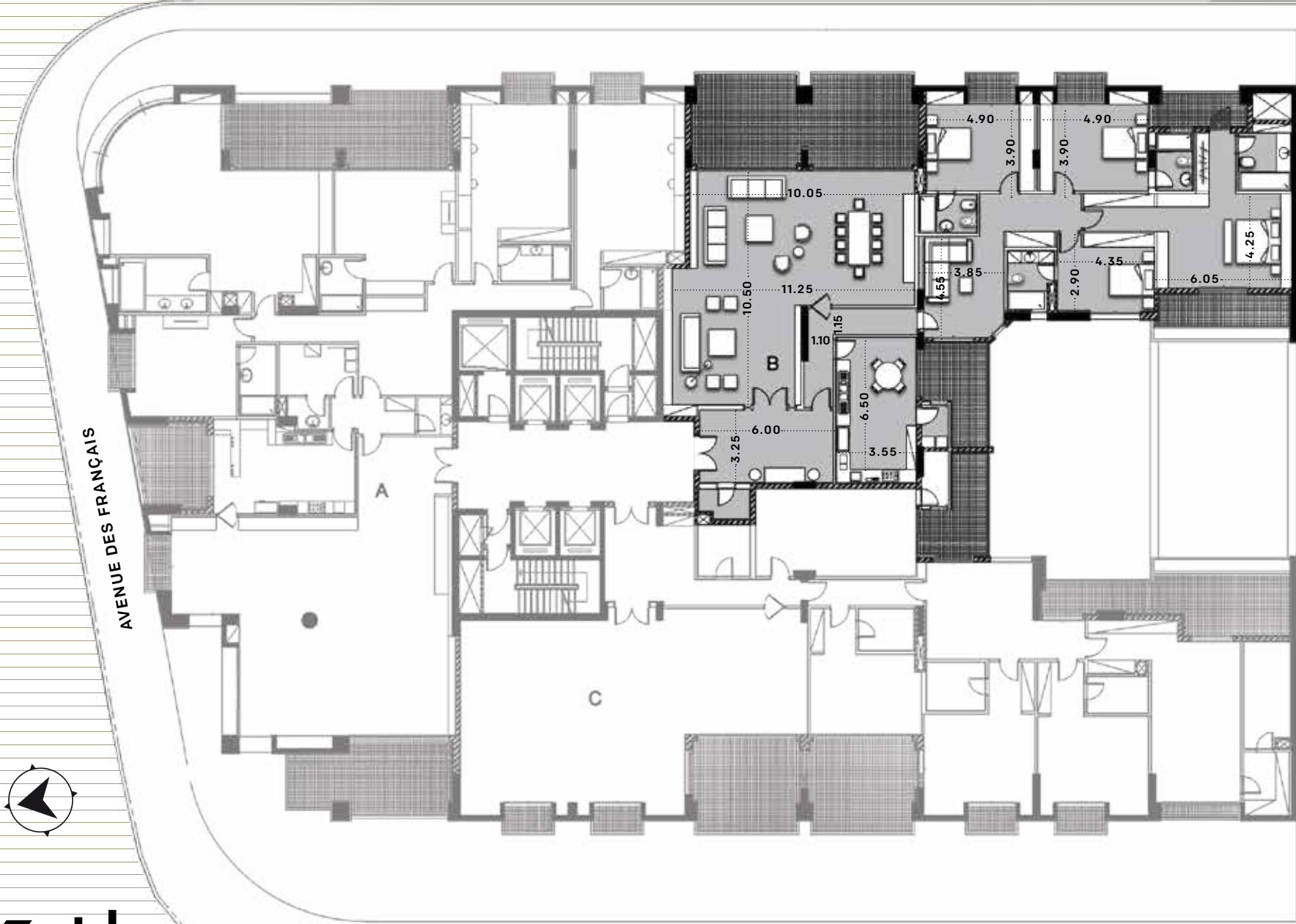
645 sqm
5 bedrooms

APARTMENT 3B

487 sqm
4 bedrooms

AVENUE DU PARC

Scale 1/250
Measurements in m



6th
FLOOR

APARTMENT 6B

487 sqm
4 bedrooms

AVENUE DU PARC

Scale 1/250
Measurements in m

ROYALLY DESIGNED

BUILDING FINISHES

- Double walls
- High end aluminum profiles
- Double glazing
- Patterned layout of cut to size limestone or marble for floors

APARTMENT FINISHES

- The reception is finished with cut to size marble or limestone
- Bedrooms have solid wood parquet
- Bathrooms have high-end imported sanitary with marble or limestone floors
- Decorative gypsum works for indirect lighting

ELECTROMECHANICAL

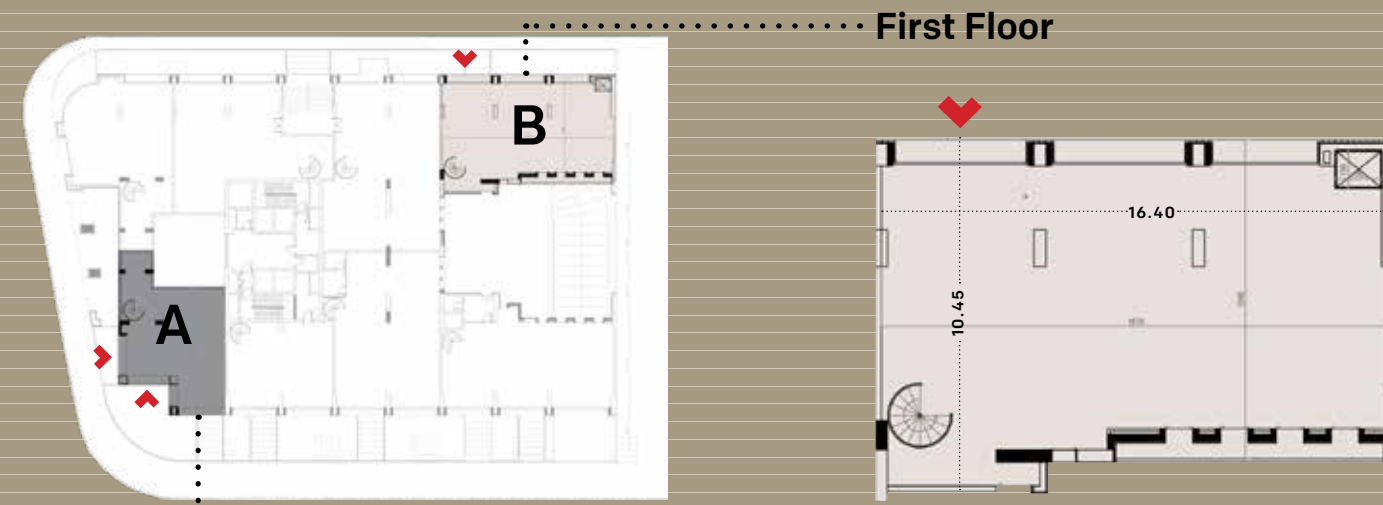
- Air conditioning through high quality chiller system with separate control for each room
- Heating through air pumps, air handling units and radiators
- Plumbing through high end European galvanized steel pipes
- High end electrical wiring and accessories

GENERAL

- Advanced Building Management System
- A spacious entrance reflecting splendor
- 24 hour security
- Car parking and storage for each apartment
- Automatic gates, and CCTV system for basements
- Fire detection and prevention

THE SHOPS

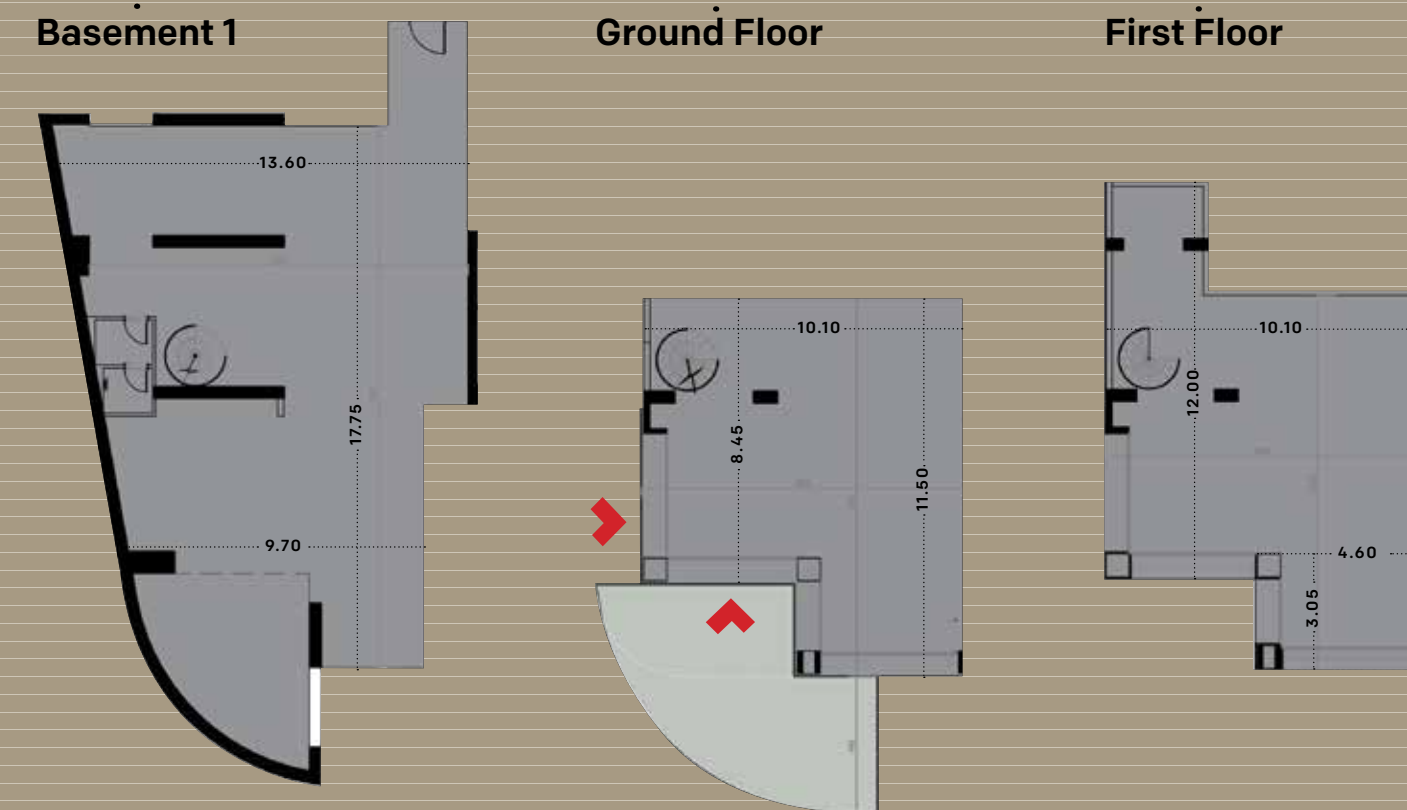




SHOP B
FOR SALE 186 sqm



Scale 1/250
 Measurements in m



SHOP A
FOR RENT B1 239 sqm
 GF 117 sqm + Sidewalk
 FF 130 sqm

A PRIVILEGED POSITION

PARK PALACE IS YOUR PRIVATE KINGDOM WHERE YOU CAN BE IN PERFECT CONTROL OF YOUR IDEAL LIFESTYLE DUE TO THE GREAT LOCATION, BEAUTIFUL VIEWS AND GREENERY, STUNNING ARCHITECTURE, CHIC FINISHING AND LUXURY APARTMENTS.

HERE YOU WILL FEEL THAT YOU ARE AT THE CENTER OF LIFE AT ITS RICHEST.

Disclaimer: The information and details contained in this brochure are intended to give a general indication of the proposed development and floor layouts. The developer reserves the right to alter any part of the development or floor layouts at any time. The contents herein will not be binding to the developer. The full terms and conditions of sale are exclusively contained in the developer's sales contract.



www.spicedesign.cc © 2018



Marfaa 146 Building - Allenby Street - Beirut Central District - Beirut - Lebanon - T +9611 987 708 / 9